



## Prestel 4K-PTZ91B30N

Advanced 4K60p PTZ Camera



[BROCHURE](#)

# 4K-PTZ91B30N

Advanced 4K60p PTZ Camera for immersive broadcast VR video production



Broadcast Level PTZ Camera Disrupts AV Industry

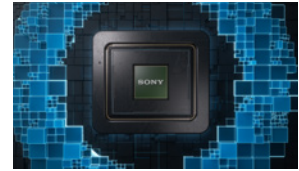
30X | 4K | AUTO-TRACKING  
FREED | GENLOCK

SFP+/12G-SDI/HDMI/NDI®/NDI®HX/XLR



## High-Performance Sensor and Image Processor

The Camera boasts a Sony 1/1.8-inch 9MP CMOS sensor and a state-of-the-art image processor, to deliver stunning UHD images that capture realistic colors and maintain rapid focus.



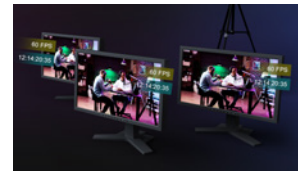
## Versatile Output Options

This Camera offers diverse output options, ensuring 4K60p output through NDI®, NDI®HX, 12G-SDI, HDMI, and SFP+. It provides great flexibility and compatibility to Telycam users.



## Genlock Functionality

The Camera features Genlock for better synchronization. This allows it to function as the main camera, ensuring precise video synchronization with sub-cameras in broadcasting and live streaming setups.



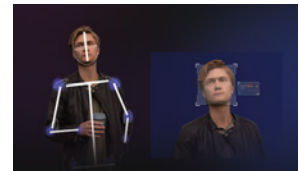
## Robust Audio Capabilities

The Camera features 3.5mm line-in and Mini XLR with Phantom power, providing compatibility with various microphones and audio equipment.



## Native AI-Based Auto-Tracking

The Camera features AI-based auto-tracking, automatically following subjects to enhance ease of use and capture the moments flawlessly.



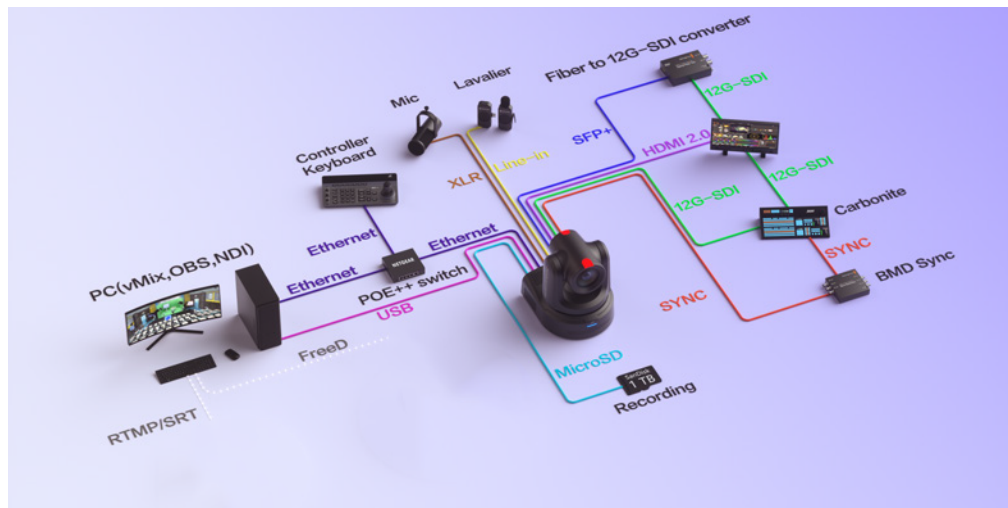
## FreeD Technology Integration

The Camera integrates Free D technology for versatile shooting angles, ideal for both real-world and virtual applications.



## MicroSD Card Slots

MicroSD card slots—one for firmware upgrades and the other for local recording. Record directly onto the camera for instant backup during network issues or quick access, ideal for prompt event review.



## Specifications

### Camera

Model	4K-PTZ91B30N
Sensor	1/1.8 inch, 9MP UHD CMOS sensor
Zoom	30X optical zoom
Lens	f = 6.91~214.64mm, F1.35~F4.6
Horizontal View Angle	60°(Wide)~2°(Tele)
Vertical Viewing Angle	34.14°~1.12°
Diagonal Viewing Angle	67.08°~2.27
Minimum Working Distance	Wide: 30cm; Tele: 150cm
S/N Ratio	≥50dB

Video Format	12G-SDI: 3840*2160 P60/50/30/25/29.97/24/23.98; 1920*1080P60/50/30/25/59.94/29.97/24/23.98; 1920*1080I60/50/59.94; 1280*720P60/50/30/25/59.94/29.97
--------------	--

3G-SDI: 1920*1080P60/59.94/50/30/29.97/25/24/23.98; 1920*1080I60/59.94/50; 1280*720P60/59.94/50/30/29.97/25
---

HDMI2.0: 3840*2160 P60/50/30/25/29.97/24/23.98; 1920*1080P60/50/30/25/59.94/29.97/24/23.98; 1920*1080I60/50/59.94; 1280*720P60/50/30/25/59.94/29.97
--

NDI® / NDI®HX: Main Stream: 3840*2160P15~60; 1920*1080P15~60; 1280*720P15~60; 1024*576P15~60; Sub Stream: 640*360P15~30
--

SFP+: 3840*2160 P60/50/30/25/29.97/24/23.98; 1920*1080P60/50/30/25/59.94/29.97/24/23.98; 1920*1080I60/50/59.94; 1280*720P60/50/30/25/59.94/29.97
---

USB Type-C: NV12: 1920*1080P5; 1280*720P15; 1024*576P25; 800*448P30 YUYV: 1920*1080P5; 1280*720P15; 1024*576P25; 800*448P30 MJPG: 3840*2160P30; 1920*1080P60; 1280*720P60; 1024*576P60; 800*448P60 H264/H265: 3840*2160P30; 1920*1080P60; 1280*720P60; 1024*576P60; 800*448P60
--

### Image Parameters

Noise Reduction	2D&3D
Minimum lux	0.5Lux(50 IRE Max AGC, 1/30, F1.8)
White Balance	Auto/Manual/ATW/Push/Indoor/Outdoor/Color Temperature
Exposure	Auto/Manual/Shutter Priority/Iris Priority/Brightness Priority
Anti-Flicker	OFF, 50Hz, 60Hz
Image Flip/Mirroring	Supported
Focus/Iris/Electronic-shutter	Auto/Manual
Gamma	Supported
Backlight Compensation	Supported

### IP Streaming

Video Encoding	H.264/H.265
Bitrate Control	Variable bitrate(VBR), Constant bitrate(CBR)
Bitrate Range	1M~120Mbps
Network Port Speed	1000M
Protocol	NDI®, NDI®HX, SRT, HTTP, RTSP, RTMP, ONVIF, SSDP, RTP, Multicast, NTP, VISCA over IP(TCP&UDP), VISCA, PELCO P/D, FreeD

### Pan/Tilt Movement

Preset	Remote controller: 10; Serial port: 256; Accuracy: 0.1°
Pan Rotation Angle	-170°~+170°
Tilt Rotation Angle	-90°~+90°
Pan Rotation Speed	0.1°~80°/s
Tilt Rotation Speed	0.1°~60°/s

### I/O Interface

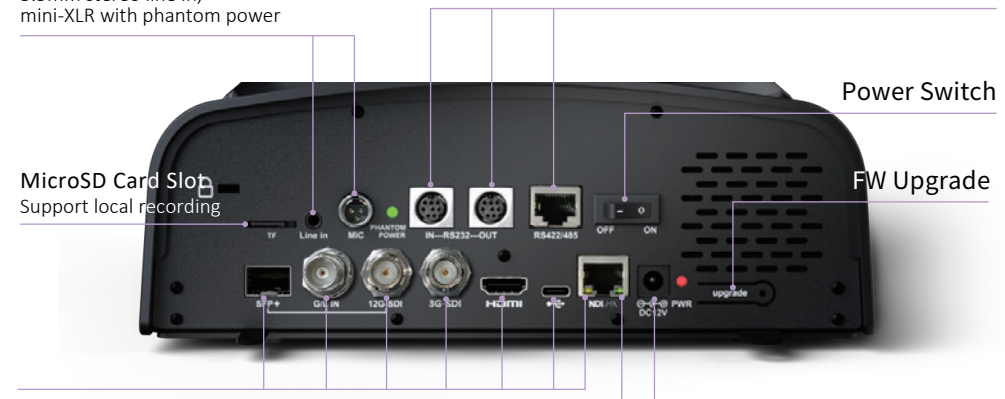
Control Port	RS232, RS485, RS422, RJ45, USB, NDI®HX
Video Port	NDI®, NDI®HX, HDMI 2.0, 12G-SDI, 3G-SDI, SFP+, USB Type-C
Audio Port	Min XLR(with phantom power), stereo 3.5mm line in
Tally	Supported
POE++	Supported
Daisy Chain	Supported

### General

Input Voltage	DC12V, POE++(IEEE802.3bt)
Operating Temperature	-10°C~50°C
Operating Humidity	≤80%
Dimension (LxWxH)	232.5mm×264mm×269mm
Net Weight	4.6kg(4.2LBS)
Color	Black/White

Audio Input  
3.5mm stereo line in,  
mini-XLR with phantom power

Remote control port  
VISCA IN/VISCA OUT/RS422



Video Output  
SFP+, G/L IN, 12G-SDI, 3G-SDI, HDMI, USB Type-C, NDI®, NDI®HX

Power Supply  
POE++, DC12V